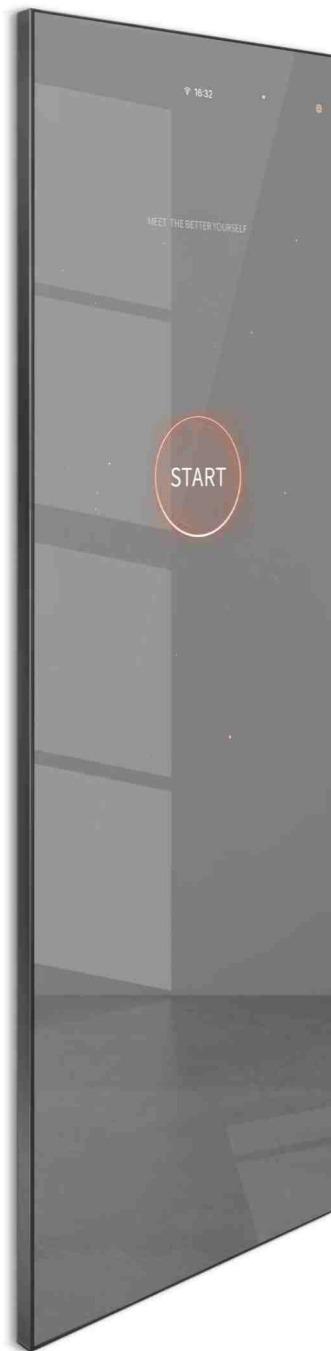


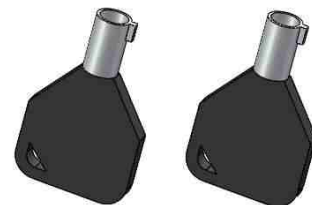
Smart Mirror

FITNESS SMART MIRROR



INSTALLATION

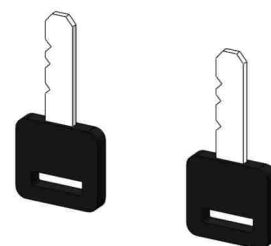
PARTS LIST



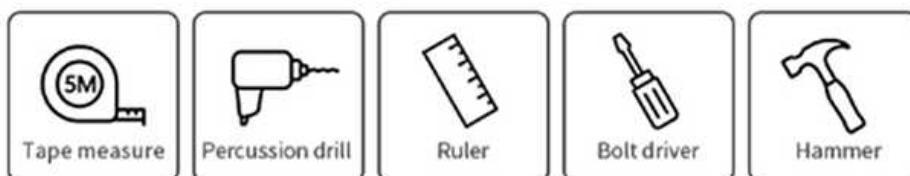
keys for camera box door



Power wired



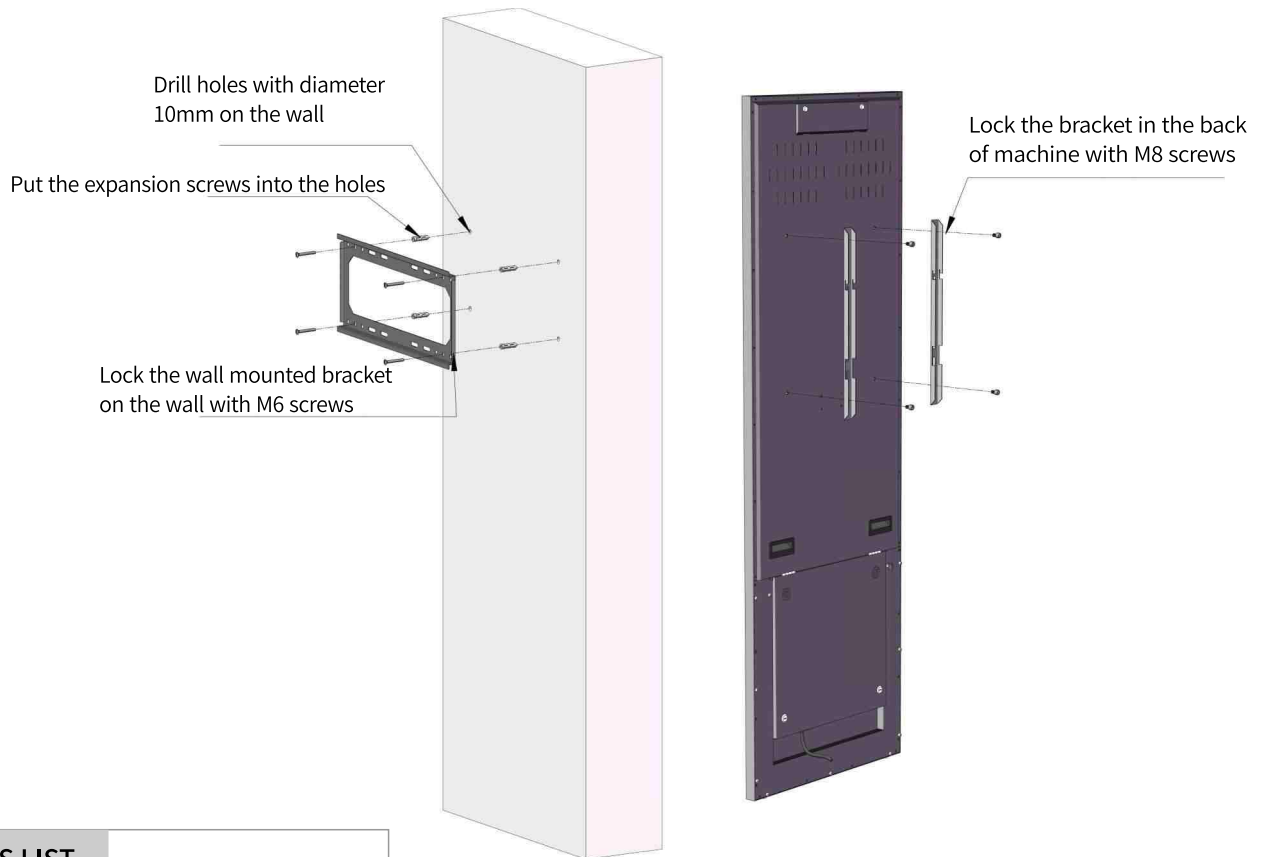
Keys for maintaining door



Both wall mounted or floor standing can be made as you need, just choose one way to install.

INSTALLATION

WALL MOUNTED



PARTS LIST



M8 screw



M6 hexagonsocket head cap screws



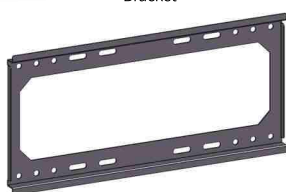
Expansion screw



Internal hexagonal wrench



Bracket



Wall mounted bracket

Mount the machine on the wall

Power on

FLOOR STANDING INSTALLATION STEPS

PARTS LIST



M6 internal hexagonal screws



5mm internal hexagonal wrench



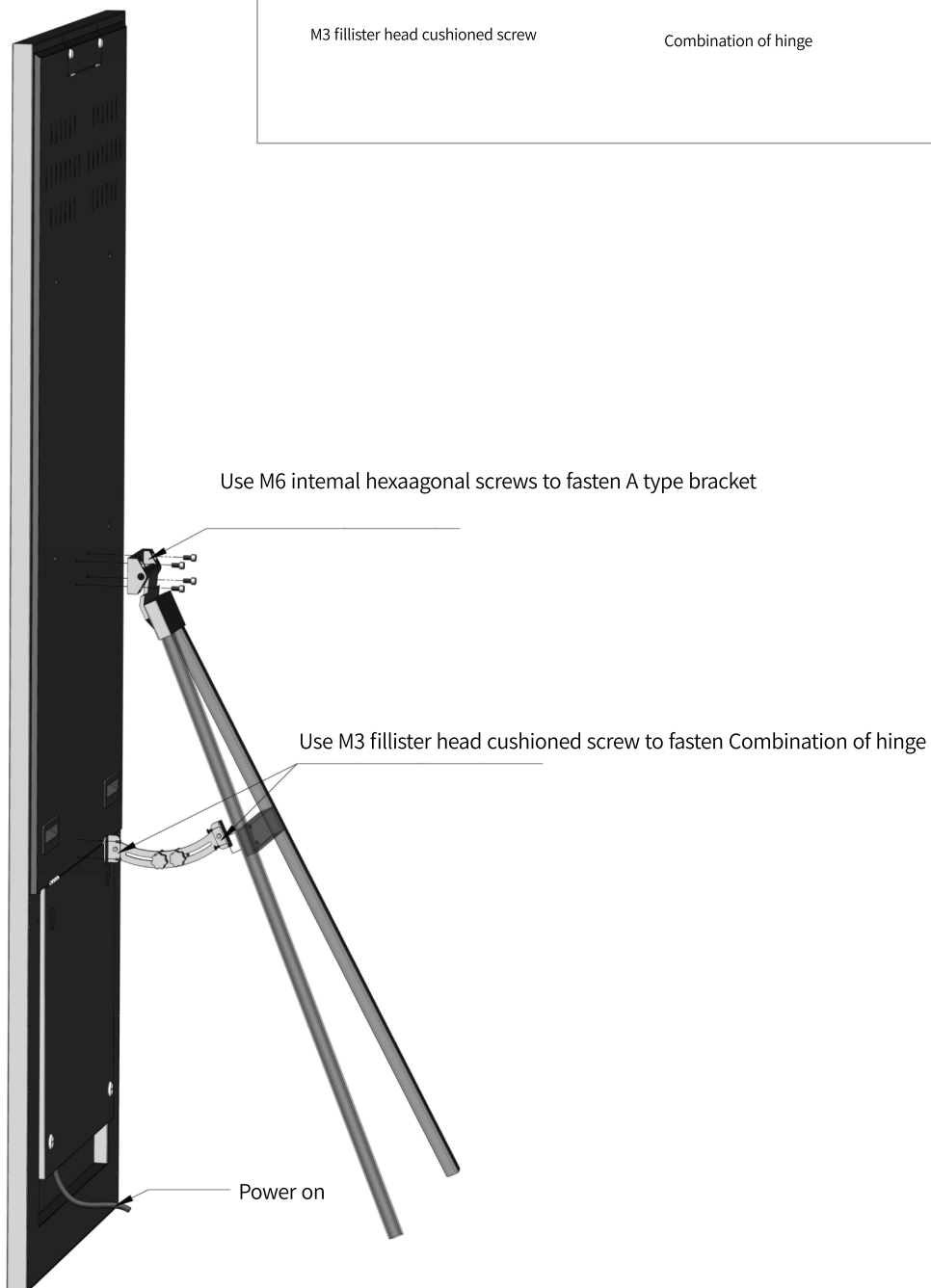
M3 fillister head cushioned screw



Combination of hinge



A type bracket

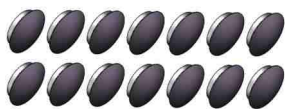


FLOOR STANDING INSTALLATION STEPS

Installation instructions



PARTS LIST



15mm hole plug



4mm internal hexagonal wrench
5mm internal hexagonal wrench



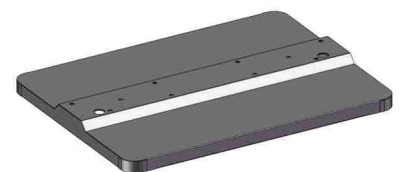
M8 screw



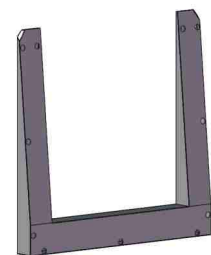
M6 screw



Bracket



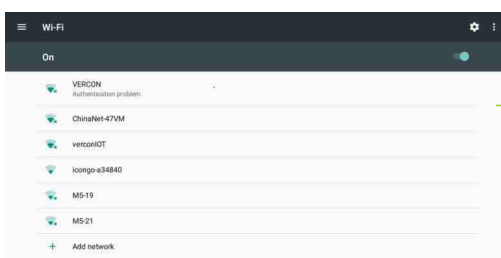
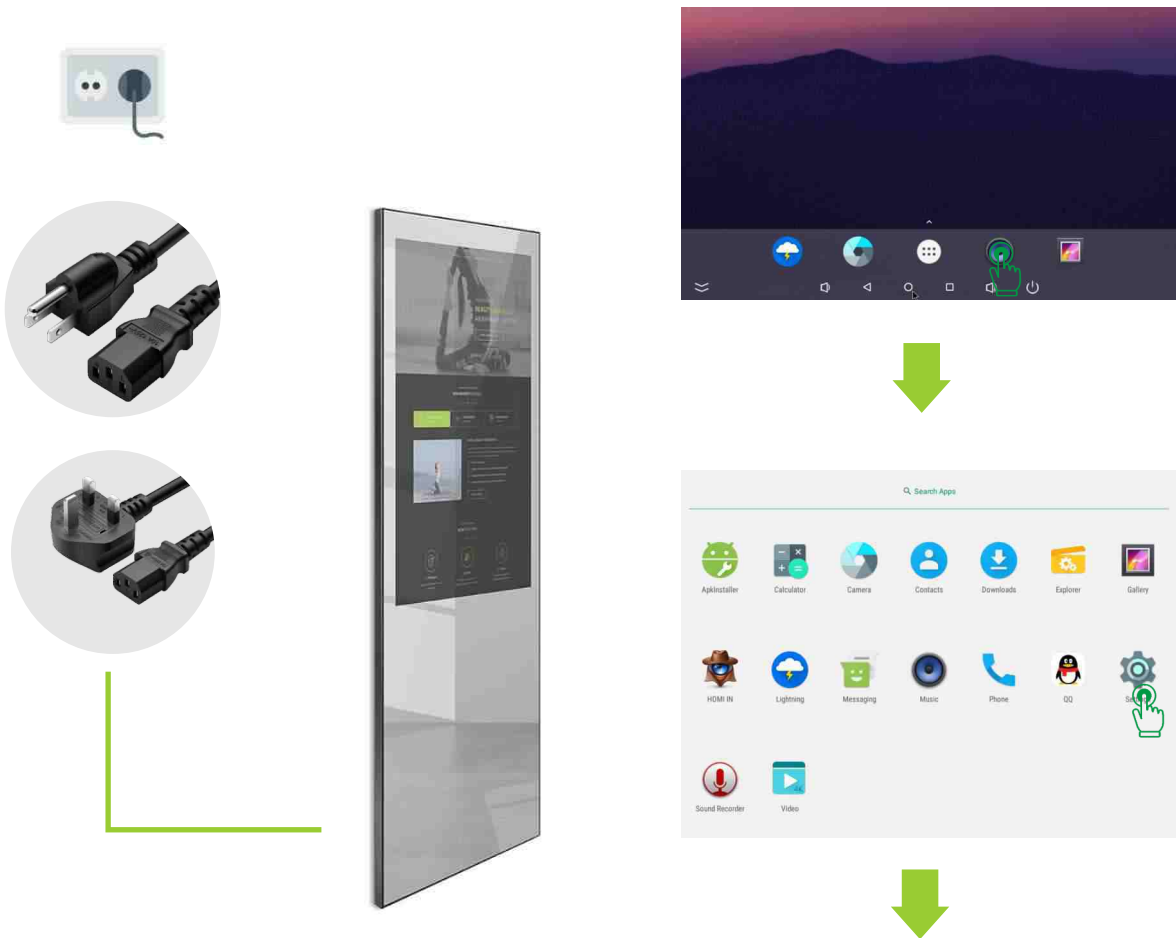
Base



Base bracket

INSTRUCTIONS

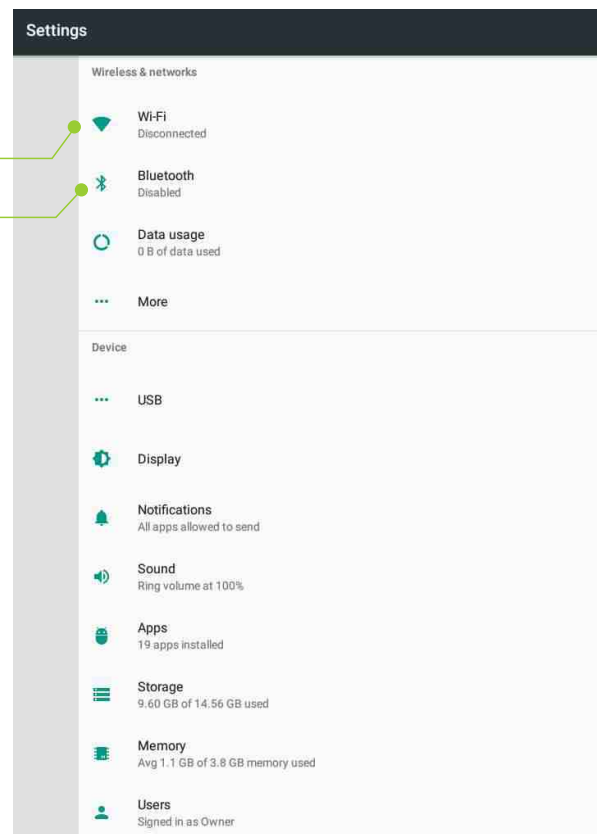
TURNING ON YOUR MIRROR VIA PLUG THE POWER WIRE DIRECTLY.



CONNECTING YOUR MIRROR TO WIFI



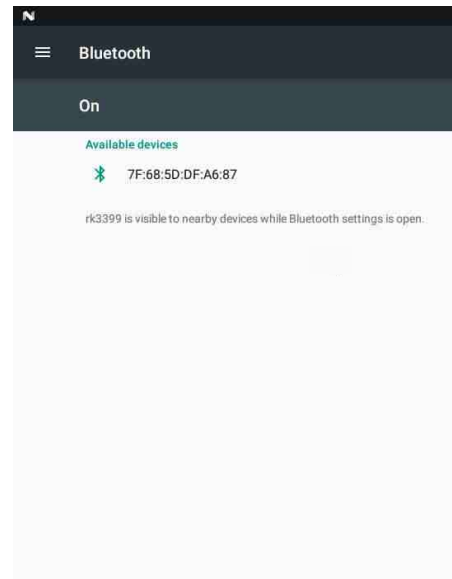
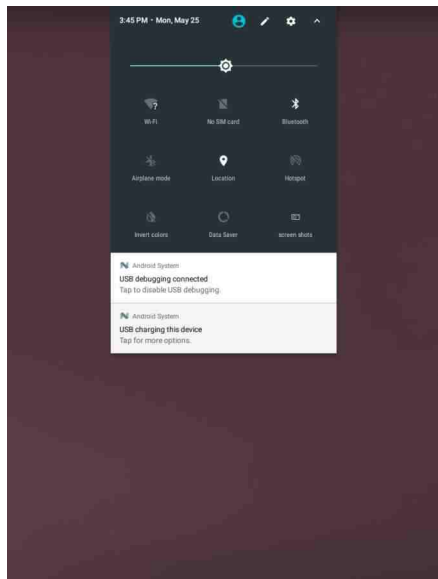
CONNECTING YOUR MICROPHONE
OR SPEAKER VIA BLUETOOTH



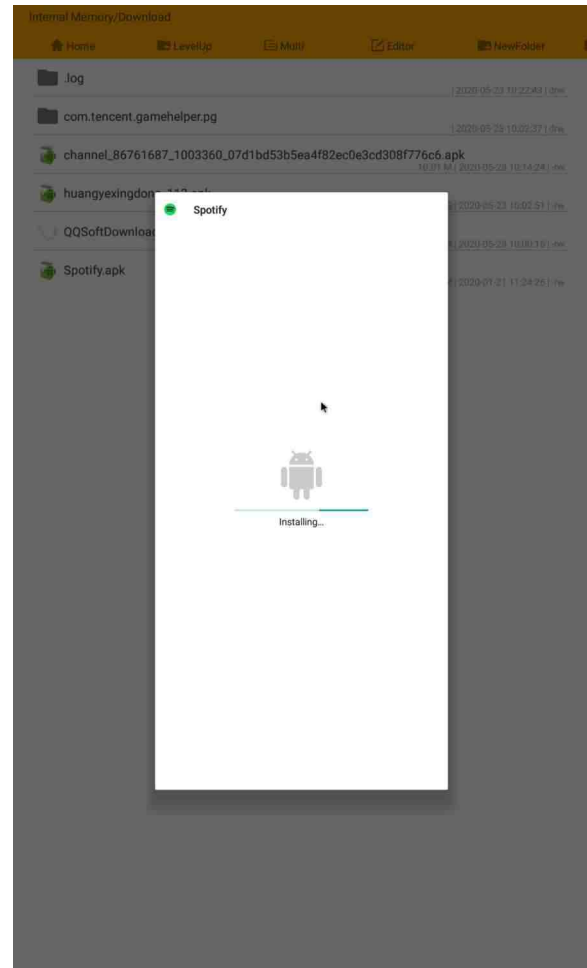
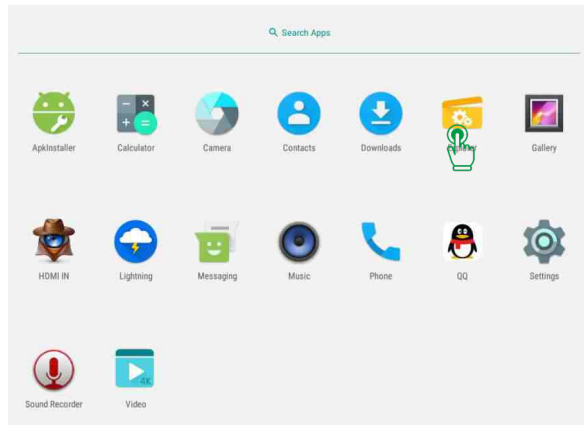
INSTRUCTIONS

INSTALL YOUR OWN APP TO YOUR MIRROR

1. Send the installation package to the mirror via USB copy or bluetooth transmitting.



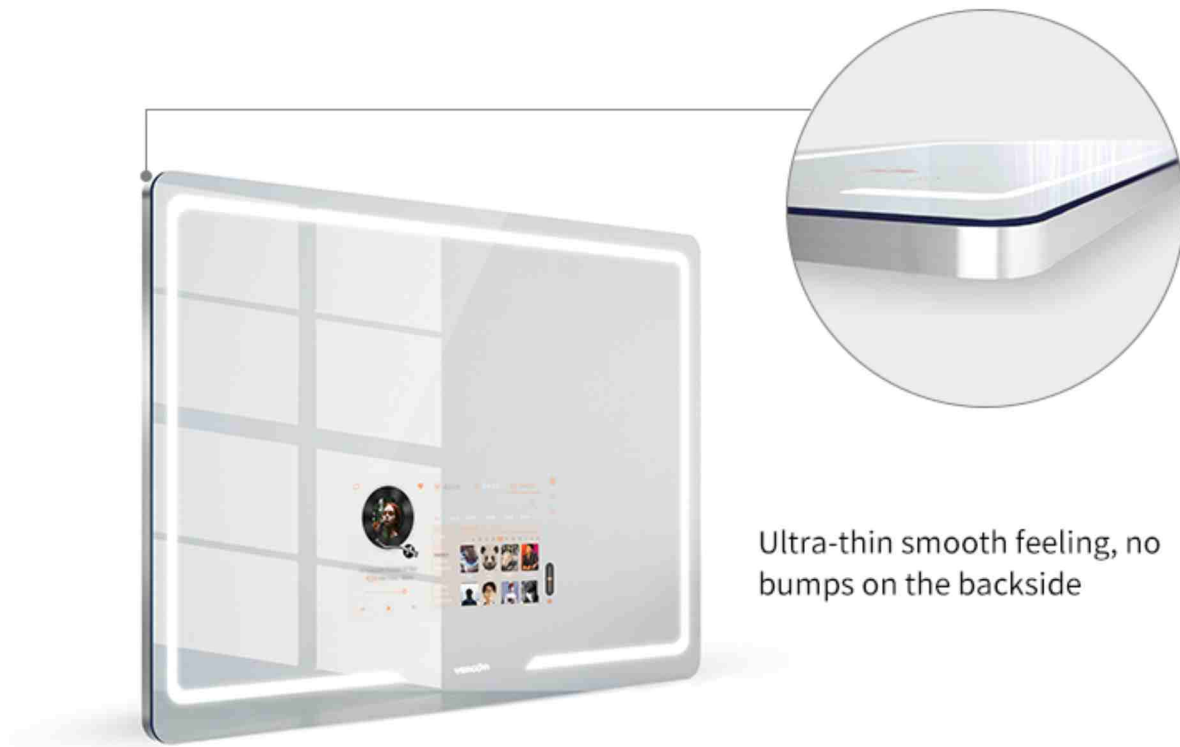
2. Open the installation package and install to run.



Product		vercon 43inch mirror
The host	CPU	Dual-core Cortex-A72 + Quad-core Cortex-A53 up to 1.8GHz
	Memory	4G+32G
	GPU	Mali-T864
	System version	RK3399 Android 7.1
	Bluetooth	4.2BLE
	Network	Wifi 2.4GHz+5.0GHz 802.11 b/g/n
	The stereo	8ΩW * 2
	Interface	USB-typeC*1,USB2.0*1,USB3.0*1,RJ45*1, DC12*1,AUDIO IN *1,Tfcard
LCD screen	Display size	43 inch)16: 9(
	Resolution	1920*1080
	Visual range	945.8)H(×534.02)W(mm
	Brightness	350cd/
	Chroma	16.7M
	Sweep frequency	60Hz
	Response time	Typ.6ms
	Viewing angle	89°/89°/89°/89°
Touch screen	Touch type	Projective capacitive touch screen 10 points
	Touch the surface	Electroplated glass
	Surface hardness	6H
	Reflectivity	65%
	Light transmittance	35%
	Supported points	10points touch
	Supported resolution	4096*4096
	The reaction time	≥10ms
	Life span	Touch ≤ 500million times
The power	The power supply voltage	AC110-240V
	Power consumption	75W
The environment	The work environment	0 —60 20%-80%RH No condensation
	Storage environment	-20 —80 20%-80%RH No condensation
	The whole machine size	1800*600*30mm/1800*600*37mm
	Installation and net weight	Vertical /48Kg
Optional Accessory	Camera	HD camera/ 3D depth camera
Optional Accessory	Body Fat Scale	Body Fat Scale



THE ADVANTAGES OF VERCON SMART BATHROOM MIRROR



LED Light

Three LED atmosphere light modes


Cold White


Daylight


Warm White



Defogging effect, more clear image.

Defogger Mirror



Foggy Mirror

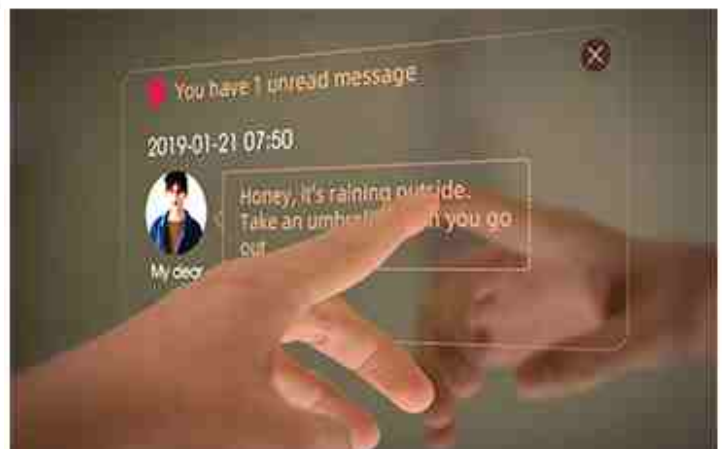


IP65 waterproof & dustproof level

Fully waterproof structure design, to ensure the safety for users.

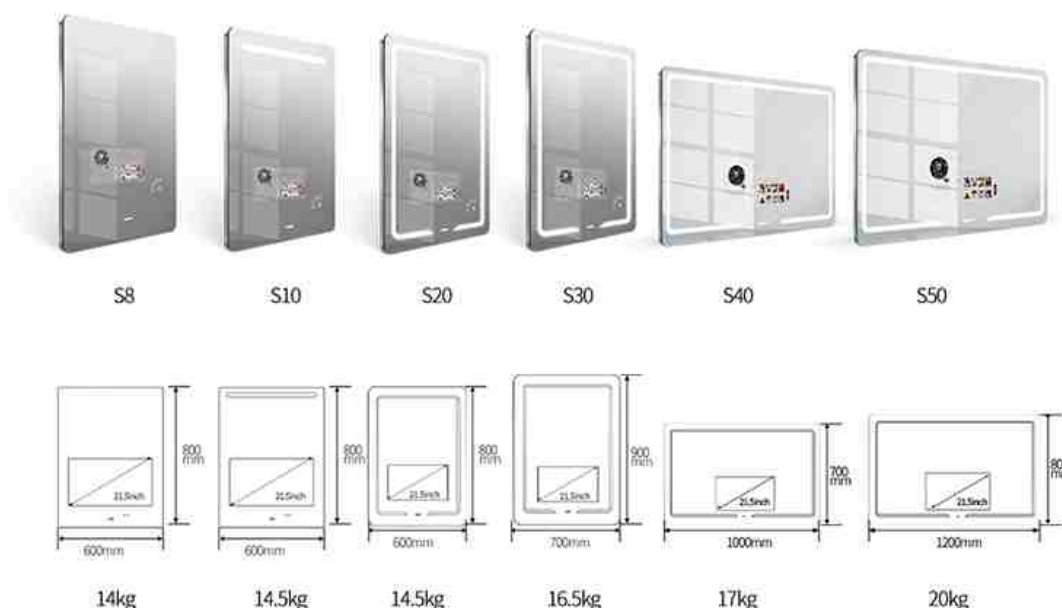


User interface



Specification

Dimension



Software and CPU Configuration

Main Frequency	Quad Core Cortex A17 1.8GHZ
GPU	Mali-T764
RAM	2GB
Flash Memory	8 GB
Wifi	2.4GHz+5.0GHz dual-band WiFi
	802.11a/b/g/n
Bluetooth	4.0
Operating System	Android 5.1.
Capacitive Touch Screen	10 touch points
Power Switch	Touch
Human Body Sensor	0~50cm
ZigBee Module	Optional

I/O

USB	USB-typeC*1
-----	-------------

Speaker

AUDIO OUT	8 Ω 5w*2
-----------	----------

Working/Storage Environment

Working/storage humidity	20% to 80 % RH, No Condensation
Working/storage temp.	0 to 60 °C /-20 to 80 °C

Mirror Screen with Capacitive Touch

Touch Display Screen	21.5" IPS
Zoom	16:9
Resolution	1920 x1080
Brightness	250cd/m ²
Contrast	3000:1 (by screen specifications)
Viewing angle	89°/89°/89°/89°
Response time	13/5 (Typ.)(Tr/Td) ms
Mirror transmittance	35%
Anti-fingerprint coating on mirror	Yes
Life Span	≥25000 Hour

Power/power consumption

Power Input (built-in switching power supply)	AC 100-240V 50/60Hz
Power Consumption	≤60W
Standby Power Consumption	≤0.5W

Installation Method

Wall Mounted Installation

Appearance / Materials / Crafts

Certificate	CE/FCC/CCC/ISO9001
Panel Glass	dielectric mirror
Material / Process	Stainless steel hanger, aluminum alloy frame, plastic sound cavity, etc.
Dustproof and Waterproof	IP65



Warnings

- . Always ensure that the fitness smart mirror is wiped down after each use to keep it sanitary.
- .Cleaning and user maintenance shall not be made by children without supervision.
- . The appliance is suitable for moderate climates only.
- . The ventilation must not be impaired by covering the appliance with items such as newspapers, table cloths,curtains,etc.
- .Naked flame sources, such as candles, must not be placed on the appliance.
- . The disconnection from line voltage is made by inlet/plug.
- . The outlet shall be installed near the equipment and shall be easily accessible.
- . In case of broken cords or plugs the appliance must be disposed of.
- . The appliance is suitable for indoor using only.
- . Never use if the glass breaks.